

ROCCO T80 AGG



SPECIFICATION SHEET



ROCO T80 AGG

The T80AGG is the Ultimate Stacker when it comes to the most demanding challenges and high tonnage requirements in the aggregate sector built to last with massive advantages over its competitors in terms of strength, spec and its impressive 14,300kgs operating weight.

Working Dimensions

Length:	23.5m / (77ft)
Width:	2.3m / (7ft6")
Height:	10.5m / (34ft6") (Max)

Transport Dimensions

Length:	12.8m / (39ft3)
Width:	2.2m / (7ft2)
Height:	2.59m / 8.3ft
Weight:	14,300KG

Container Friendly (40ft HC)





Belt/Conveyor

Spoke drum installed under hopper (Preventing damage to belt and material build up)

Belt Width: 1050mm / 42"

Belt Spec: Top Quality 3 Ply plain asStandard

Drive: Hydraulic Motor

Skirting Rubber Installed: To feed Booth

All return rollers are disc rollers to aid with belt cleaning, Adjustable belt scraper installed for keeping belt clean.

Undercarriage

Overall Length: 4.6m

Overall Width: 2.3m

Shoe Width: 400mm

Drive: Hydraulic Motor

Maximum TravelSpeed: 1 KM/H

Hydraulics

Hydraulic Cylinders: 8x No, Safety Valves Installed to all hydraulic cylinders, preventing the need for pinning and resulting in the T80AGG working at any possible angle.

Feed Booth

Heavy duty impact bed installed to hopper as standard, Ideal for heavy crusher feed & conveyor belt protection.

Length: 2.45m (8.05ft)

Width: 2.06 (6.76ft)

Capacity: 1.6m (2.1yd³)

Tracking

Dog LeadRemote: Yes

Emergency Stop: Yes

Travel Alarm: Yes

Flashing Beacon: Yes



T80 AGG

Electrics

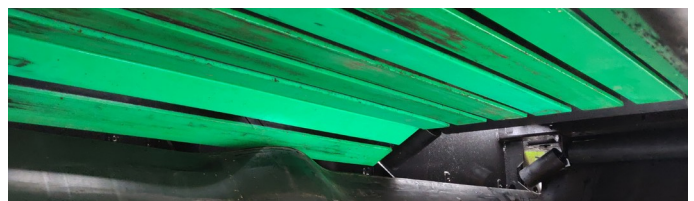
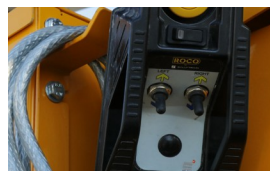
Emergency stops:	Yes
Start Siren:	Yes
Flashing Beacon:	Yes
Safety Switches:	Yes

Spec options

1. Belt Upgrade -4 ply.
2. Chevron Belt.
3. Side Skirts.
4. Dust Canopy.
5. Power unit options.
6. Anti role back.

Power unit Options

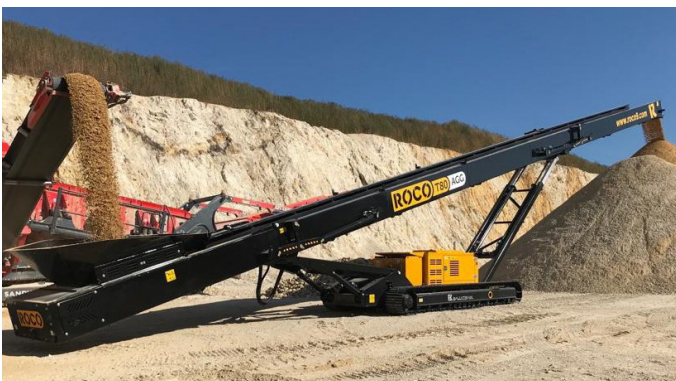
- Tier 3-JCB444 DieselMAX- ROW
- Tier 4F – CAT 2 – JCB444 ECOMAX – USA & EU
- Stage 5 – T.DEUTZ 2.9 L4 - Worldwide Acceptance



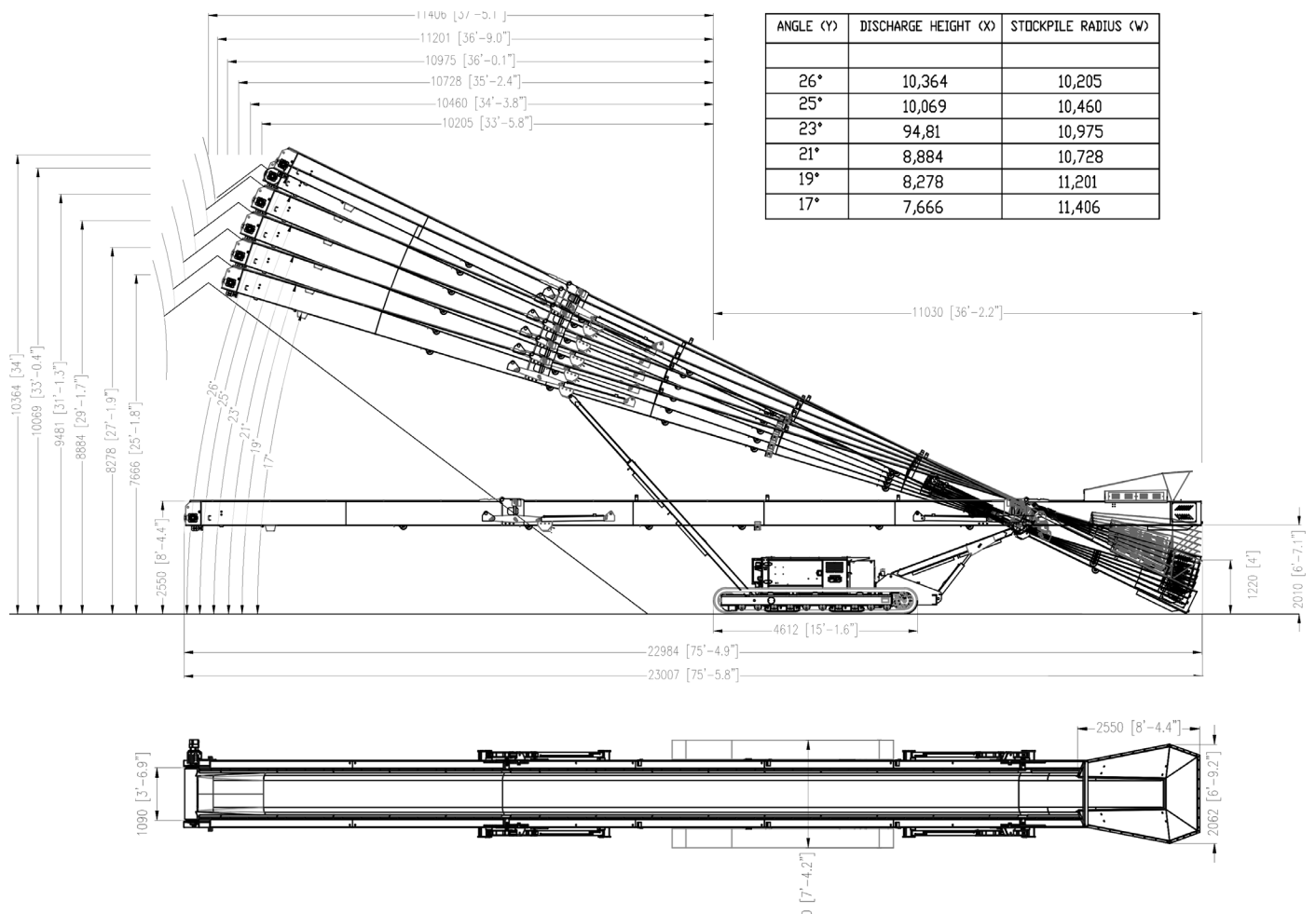


Safety Features

- External Grease Points at Ground Level(Piped).
- Engine Safety Shutdown Sensors to Oil, Level Over-speed, Water Level / Over Heating.
- CE Compliance Complete with Certificate.
- Safety Decals Installed Highlighting DangerPoints.
- Nip Points Highlighted.
- Lockable Shutdown / Isolator Switch.
- All Return Rollers Safety Guarded.
- Emergency stop switches installed (Dog-lead, Main chassis left&right)
- Full Hardback User Manual, Parts Manual And USB key provided
- Delayed starting with siren.
- Flashing beacon while maneuvering
- Check valve cylinders - No Pinning required
- Fully hydraulic set up - No manual labour required



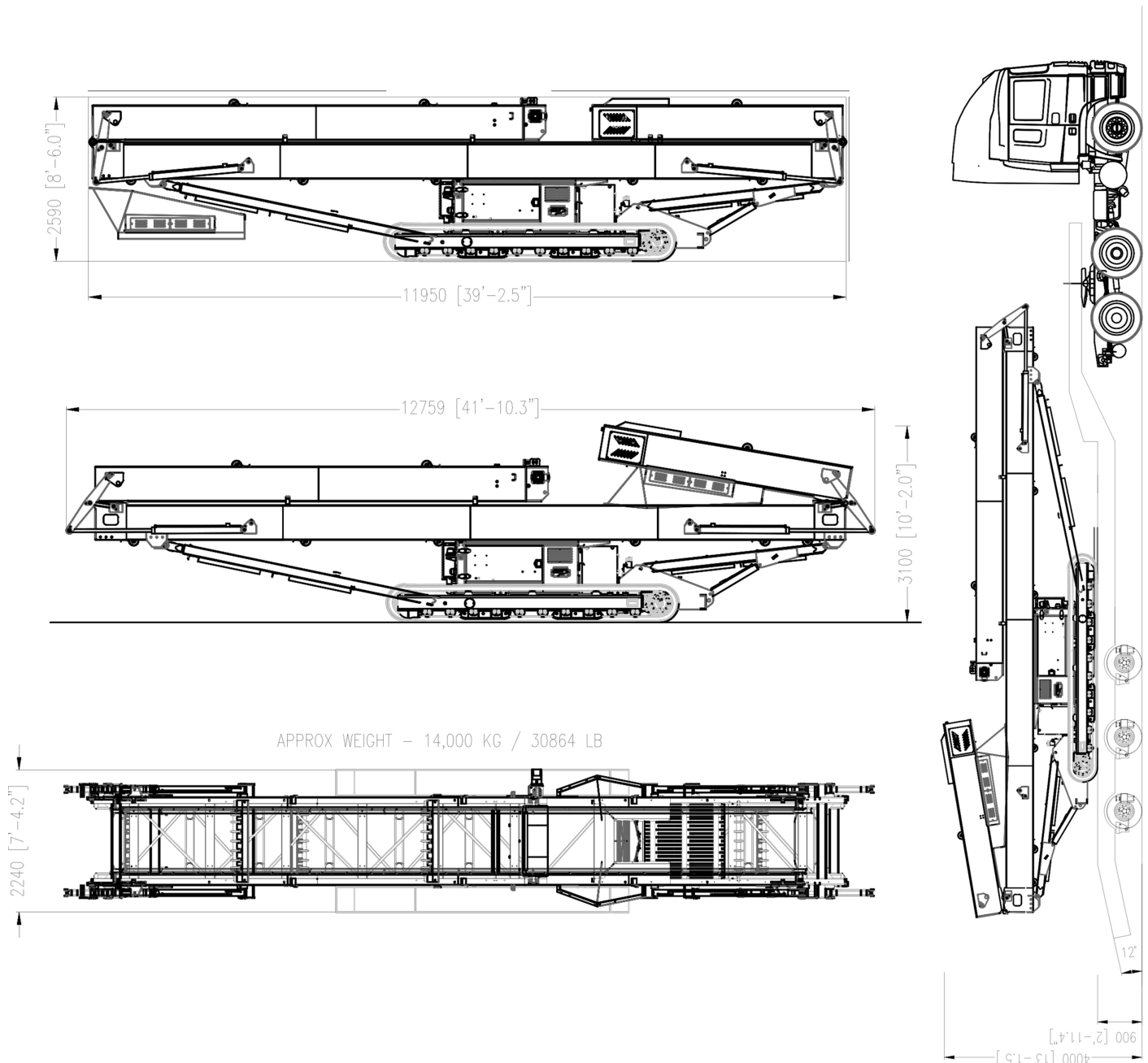
Working Position





Transport Position

Container Friendly 40FT HC



ROCO



205A Concession Road
Crossmaglen, Newry
Co. Armagh, Northern Ireland
BT35 9JD

T +44 28 30868833
E sales@roco9.com

