

ROCO T65 AGG



SPECIFICATION SHEET

ROCO T65 AGG

The T65AGG is the Ultimate Stacker when it comes to the most demanding challenges and high tonnage requirements in the aggregate sector built to last with massive advantages over its competitors in terms of strength, spec and its impressive 12,000kgs operating weight.

Working Dimensions

Length:	18.3m / (60ft)
Width:	2.3m / (7ft 5")
Height:	8.4m / (27ft 4") (Max)

Transport Dimensions

Length:	12.8m / (39ft 3")
Width:	2.3m / (7ft 3")
Height:	2.59m / (8.3ft)
Weight:	12,000kg

Container Friendly (40ft HC)





Belt/Conveyor

Spoke drum installed under hopper (Preventing damage to belt and material build up)

Belt Width:	900mm / 36"
Belt Spec:	Top Quality 3 Ply plain as Standard
Drive:	Hydraulic Motor
Skirting Rubber Installed:	To feed Booth

All return rollers are disc rollers to aid with belt cleaning, Adjustable belt scraper installed for keeping belt clean.

Undercarriage

Overall Length:	3.43m
Overall Width:	2.3m
Shoe Width:	300mm
Drive:	Hydraulic Motor
Maximum Travel Speed:	1 KM/H

Hydraulics

Hydraulic Cylinders: 4x no safety valves installed to all hydraulic cylinders, preventing the need for pinning and resulting in the T65AGG working at any possible angle.

Feed Booth

Heavy duty impact bed installed to hopper as standard, Ideal for heavy crusher feed & conveyor belt protection.

Length:	2.45m (8ft 0.5")
Width:	1.89m (6ft 2")
Capacity:	1.4m ³ (1.8yd ³)

Tracking

Dog Lead Remote:	Yes
Emergency Stop:	Yes
Travel Alarm:	Yes
Flashing Beacon:	Yes

Electrics

Emergency stops:	Yes
Start Siren:	Yes
Flashing Beacon:	Yes
Safety Switches:	Yes

Spec options

1. Belt Upgrade -4 ply.
2. Chevron Belt.
3. Side Skirts.
4. Dust Canopy.
5. Power unit options.

Power unit Options

- Tier 3 – JCB 444 DieselMAX– ROW
- Tier 4F - CAT 2.8 NA 55KW (49HP) - USA
- Stage 5 – T.DEUTZ 2.9 L4 - 50kw (67HP) -EU



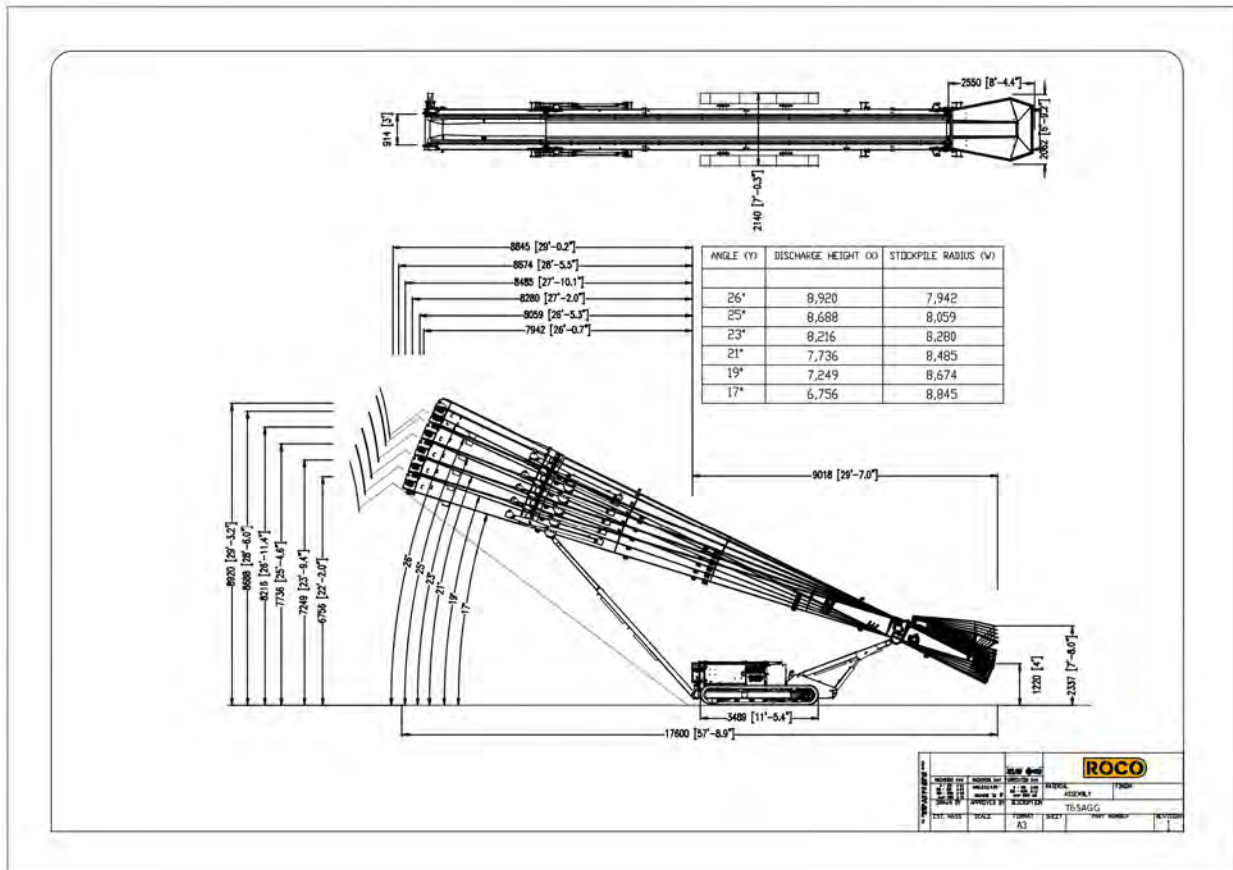


Safety Features

- External Grease Points at Ground Level (Piped).
- Engine Safety Shutdown Sensors to Oil, Level Over-speed, Water Level / Over Heating.
- CE Compliance Complete with Certificate.
- Safety Decals Installed Highlighting Danger Points.
- Nip Points Highlighted.
- Lockable Shutdown / Isolator Switch.
- All Return Rollers Safety Guarded.
- Emergency stop switches installed (Dog-lead, Main chassis left & right)
- Full Hardback User Manual, Parts Manual And USB key provided
- Delayed starting with siren.
- Flashing beacon while maneuvering
- Check valve cylinders - No Pinning required
- Fully hydraulic set up - No manual labour required



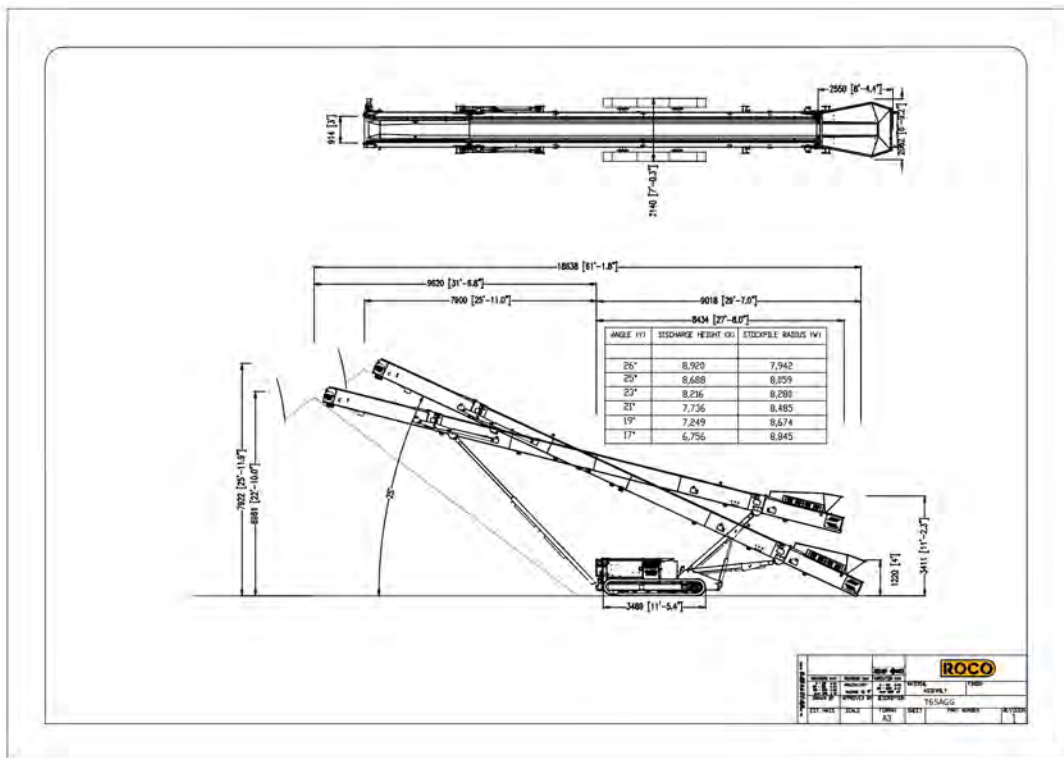
Working Position



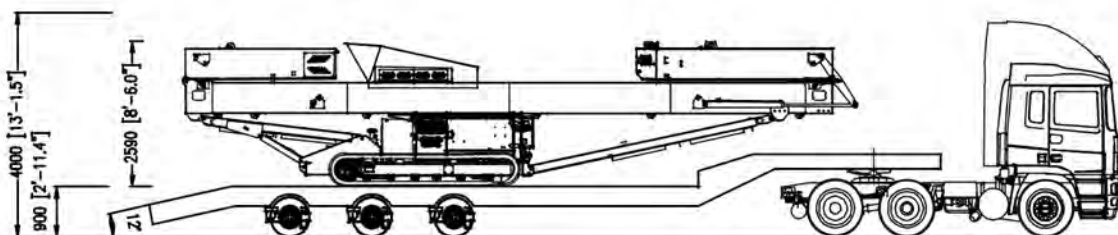


Tail Position

Container Friendly 40FT HC



Transport Position





205A Concession Road
Crossmaglen, Newry
Co. Armagh, Northern Ireland
BT35 9JD

T +44 28 30868833
E sales@roco9.com

