

ROCO X7T



SPECIFICATION SHEET



ROCO X7T

The X7T is the largest aggregate screen in the Roco X Range and it boasts a massive 20ft x 5ft / 6.15m x 1.52m screen-box. With its robust and economical design it is capable to screen and stockpile up to 600TPH while producing up to 4 x products in one pass. It also has the function to give a further oversize product from the standard 14ft Hydraulic tipping grid or a further 2 x screened products when vibrating live-head option is installed. With its full and safe hydraulic set up configuration it has the ability to arrive to site and get to work straight away with no manual labour or set up requirements. The X7T is the ideal screening choice for large tonnage output and a true clean product requirement.

Working Dimensions (Without Live-head)

Length:	19.80m / (65ft)
Width:	19.8m / (65ft)
Height:	6.28m / (20ft 7")
(Without Livehead)	

Transport Dimensions (Without Live-head)

Length:	18.03m / (59ft 2")
Width:	3.15m / (9ft 10")
Height:	3.485m / (11ft 5")
(Without Live-head)	

Hopper

Length:	4.3m / (14ft 1")
Width:	1.83m / (6ft)
Max volume:	8m ³ / (10.4yd ³)

Tipping Grid

Length:	4.95m / (16ft 2")
Width :	2.17m / (7ft)
Tip Function:	Radio remote or manual



Screenbox

Top Deck:	20ft x 5ft (6.15m x 1.52m)
Number of decks:	3
Washing / Rinsing option	Yes
Angle :	20-30 °

Fines (Tail) Belt

Width:	1200mm / 48"
Discharge Height:	4.95m / 16ft 2"
Control:	Variable speed

Mid Belt

Width:	800mm / 32" C15 Chevron
Discharge Height:	5.4m / 17ft 9"
Control:	Variable speed

Oversize Belt

Width:	800mm / 32" C15 Chevron
Discharge Height:	5.4m / 17ft 9"
Control:	Variable Speed

Auxiliary Belt

Width:	500mm / 20"
Discharge Height:	4.8m / 15ft 9"
Control:	Variable Speed

Main Belt

Width:	1050mm / 48"
Control:	Variable Speed



Operating Weight

3 Deck:	38,500KG / 84,870lbs
3 Deck with live head:	43,000KG / 94,700lbs

Electrics

Emergency stops:	Yes
Start Siren:	Yes
Flashing Beacon:	Yes
Safety Switches:	Yes

Tracks

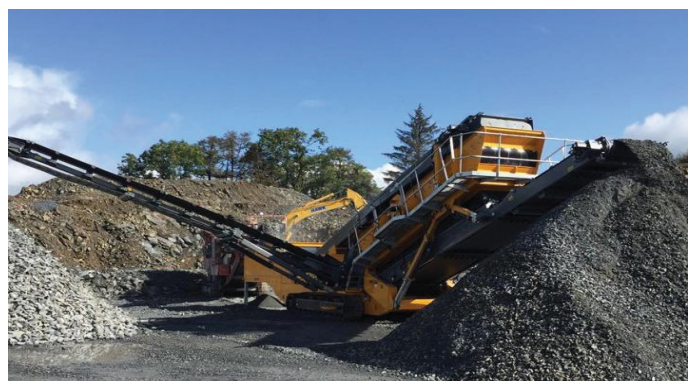
Width:	500mm (Shoes)
Speed:	1km / h

Powerpack

Diesel tank:	544 L / 119Gallon
Hydraulic tank:	630 L / 138Gallon

Performance

Max feed size:	125mm / 5"
Output potential:	Up to 450 tph / 496 tph US





Spec Options

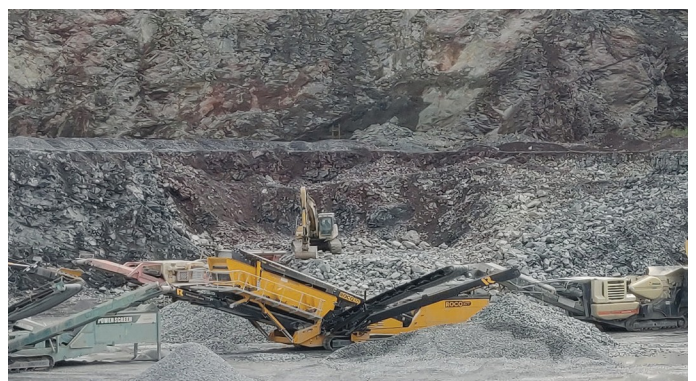
1. Two Deck vibrating live head
2. Radio remote control
3. Dust covers on main and discharge belts
4. Washing / Rinsing Option

Power Unit Options

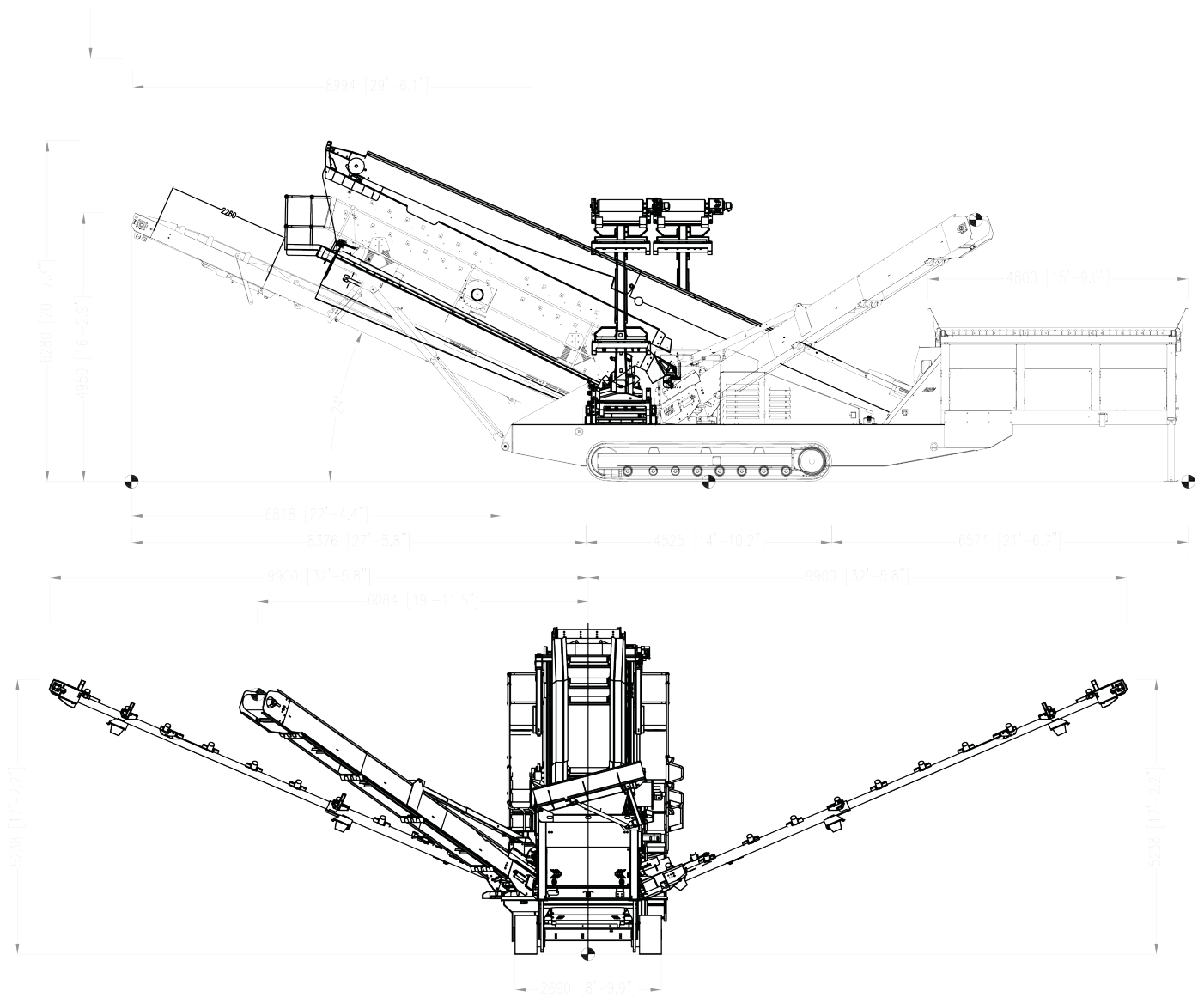
- Tier 3 - CAT 4.4 (96.5kW) or JCB444 (120kW) Diesel MAX- ROW
- Tier 4F -JCB444 Eco MAX (129kW), (CAT 129.4kW)-USA
- Stage V-JCB444 Eco Max - EU (From Jan2020)

Features and Benefits

- External Grease Points at Ground Level (Piped).
- Engine Safety Shutdown Sensors to Oil, Level Over-speed, Water Level / Over Heating.
- CE Compliance Complete with Certificate.
- Safety Decals Installed Highlighting Danger Points.
- Nip Points Highlighted.
- Lockable Shutdown / Isolator Switch.
- All Return Rollers Safety Guarded.
- Emergency stop switches installed (Dog-lead, Main chassis Left & right)
- Full Hardback User Manual & Parts Manual Provided.

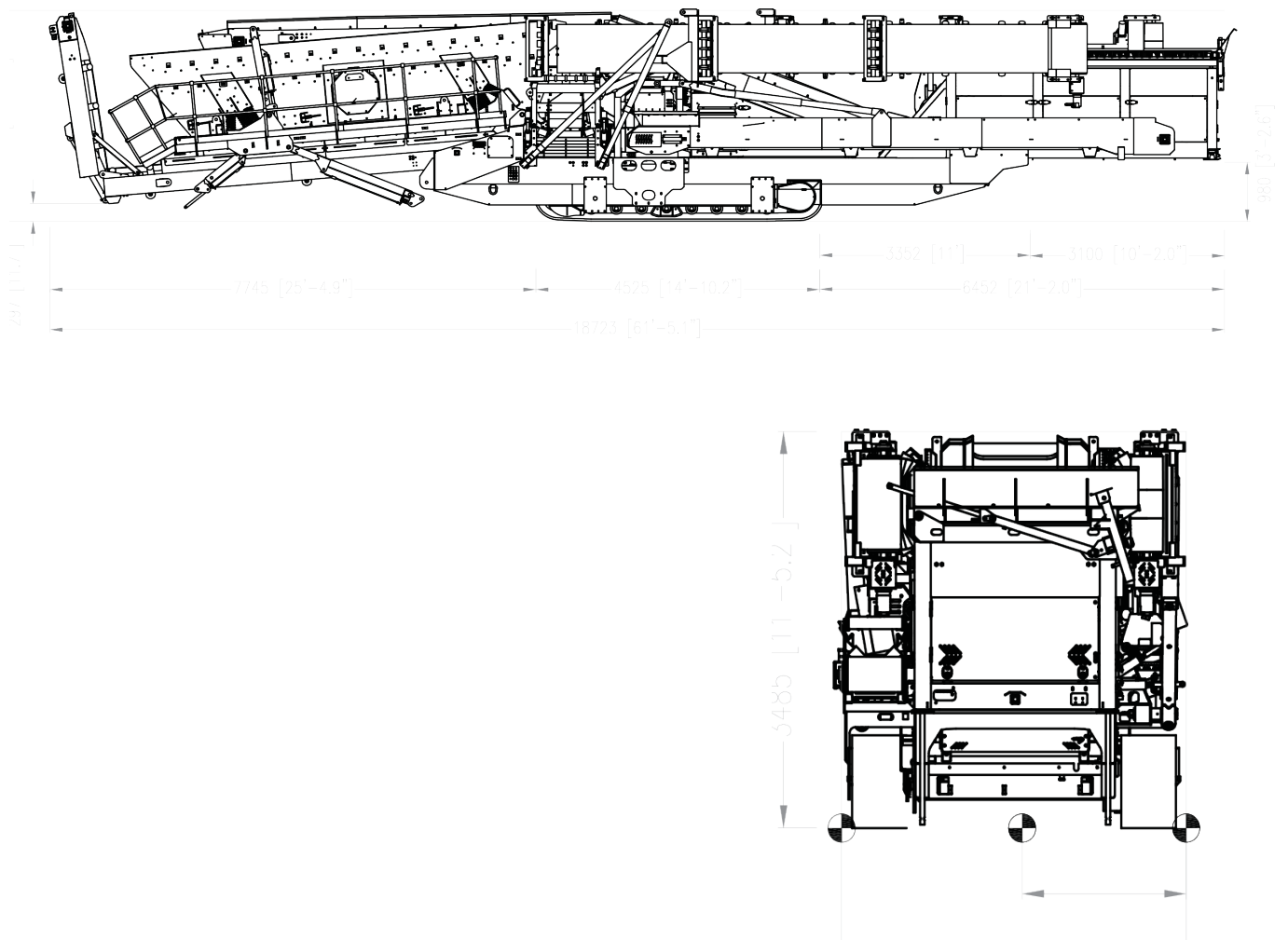


Working Position





Transport Position



ROCO



205A Concession Road
Crossmaglen, Newry
Co. Armagh, Northern Ireland
BT35 9JD

T +44 28 30868833
E sales@roco9.com

