



ALLU BUCKET BUSINESS CASE



 **EGELQUIP**



ALLU (Oy) is a Finnish brand that provides versatile & mobile hydraulic attachments for excavators, TLB's, front-end loaders and skid steers. These attachments can be used for processing, crushing, screening and shredding throughout numerous industries. The core focus of this innovative technology is to;



Transform your Profits

less material to landfill means less expenditure. **Re-use the material on site so there is no need to purchase virgin material.** Recycle and utilize left-over materials and generate an income from it.



Transform your Machines

Your excavator, wheel loader and skid-steer will transform into a multifunctional tool that will screen, crush, mix, aerate, pulverize and load all in a one-step operation.



Transform your Efficiency

One stop shop process. Screen, crush, aerate, mix and load all in "one-step operation"



Transform your Green Credentials

less material to be transported to the jobsite means a reduction in fuel consumption. Less materials to landfill and efficient utilization of waste materials supports sustainability.



A core focus for us at EgelQuip and ALLU is the Pipe Laying industry. G5-G7 materials are purchased from various suppliers at R250 – R350 a cube. The table below indicates the cost of this material at various quantities;

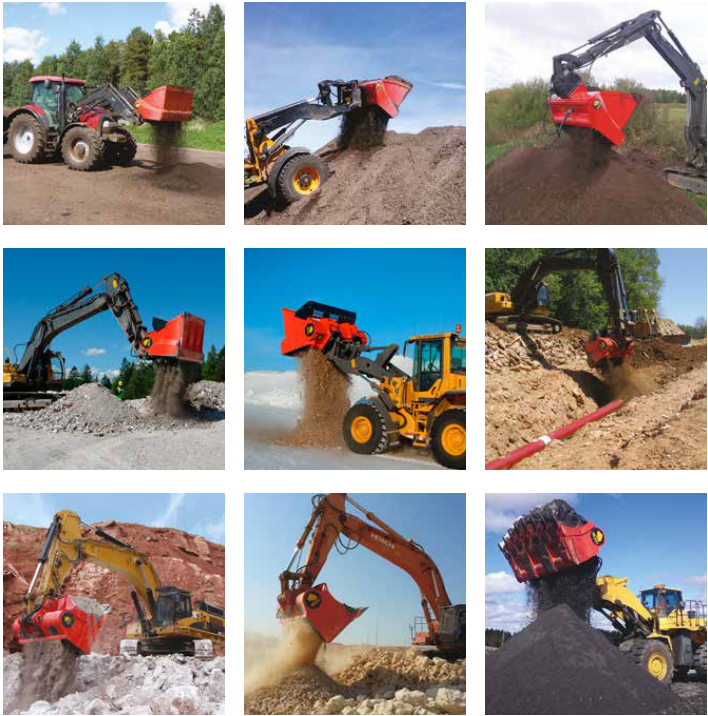
| Cost of G5 – G7 Soil/Material | | | | | |
|-------------------------------|-------------------|----------------------|----------------------|----------------------|-----------------------|
| Number of Cubes | 1 000 | 5 000 | 10 000 | 20 000 | 40 000 |
| Cost of Material (G5 - G7) | R250,00 | R250,00 | R250,00 | R250,00 | R250,00 |
| Total Cost | R250 00,00 | R1 250 000,00 | R2 500 000,00 | R5 000 000,00 | R10 000 000,00 |



With over 60 bucket options and configurations, we have a bucket suited to your needs. The model below is built around a DN3-12 bucket which can be fitted onto a 20-25ton excavator.

| ALLU DN3-12 | |
|---------------------------|-------------|
| Sale Price | R899 000,00 |
| Deposit | R |
| Finance Amount | R899 000,00 |
| | |
| Term | 36months |
| Interest Rate | 12% |
| Monthly Finance Cost | R29 859,66 |
| | |
| Number of Hours per month | 180 |
| Finance Cost per Hour | R165,89 |

Note: This is an indicative pricing.
Please contact info@egelquip.com for a quote.



The ALLU DN3-12 bucket is able to process the following amount of material per hour;

| ALLU DN3-12 | |
|--------------------------------|------|
| Processing Cycle (sec) | 60 |
| DN3-12 volume (m^3) | 0,79 |
| Cubes Processed Per Hour (m^3) | 47,4 |

This results in a cost per cube of;

| Cost of Processing Material | |
|--------------------------------|---------|
| Finance Cost per Hour | R165,89 |
| Cubes Processed Per Hour (m^3) | 47,4 |
| | |
| Cost per cube of material | R3,50 |





Note: Excavator hire has not been included in the costing model above as on most sites a 20+ton or 30+ ton excavator is accounted for in the budget as this unit is used to dig the trench.

Model above is also based on suitable on-site material that has been tested and can be used as backfill.

Which equates to 1,40% the cost of material if the cost price from a supplier is R250/cube. The table below puts these savings into perspective.

| Savings using ALLU Bucket for G5 – G7 Soil/Material | | | | | |
|---|--------------------|----------------------|----------------------|----------------------|-----------------------|
| Number of Cubes | 1 000 | 5 000 | 10 000 | 20 000 | 40 000 |
| Cost of Material (G5 - G7) | R250,00 | R250,00 | R250,00 | R250,00 | R250,00 |
| Total Cost | R250 000,00 | R1 250 000,00 | R2 500 000,00 | R5 000 000,00 | R10 000 000,00 |
| | | | | | |
| Cost of Soil using ALLU DN3-12 | R3,50 | R3,50 | R3,50 | R3,50 | R3,50 |
| Total Cost | R3 499,73 | R17 498,63 | R34 997,26 | R69 994,51 | R139 989,03 |
| Net Saving | R246 500,27 | R1 232 501,37 | R2 465 002,74 | R4 930 005,49 | R9 860 010,97 |

With ALLU, we truly do transform your profits.

For more information please visit our website at www.egelquip.com,
or email us on info@egelquip.com
or call us on +27 81 556 4519